



## Emergency Fluorescent Batten T8 Series

### SELF-CONTAINED EMERGENCY FLUORESCENT BATTEN MODULES AND SEALED NICKEL CADMIUM (NI-CD) BATTERY PACKS FOR 2 AND 3 HOURS DURATION - MAINTAINED TYPE

兩小時及三小時應急支架-長明式：包括 電子中樞(轉換/充電器)、鎳鎘電池。

#### **SPECIFICATION & TECHNICAL DATA**

規格及技術資料

MODEL 套件型號		JC20N2 JC220N2	JC30N2 JC230N2	JC40N2 JC240N2	JC65N2 JC265N2
Internal Conversion Kit 內藏電池套件		JF20N2	JF30N2	JF40N2	JF65N2
Wattage 適用瓦數	(W)	18W	30W	36W	58W
Battery Capacity & Voltage 電池容量及電壓		5x1.8AH, 6V	5x2.5AH, 6V	5x2.5AH, 6V	5x2.5AH, 6V
Battery Configuration 電池排列方式		Side by side pack			
Main Voltage / Frequency 市電(交流電)輸入電壓 / 頻率	(V)	A/C 220V ( + / - 10%) / 50Hz			
Emergency Starting Time 套件緊急照明啟動時間	(sec.)	<0.3			
Emergency Output 緊急照明輸出流明		300 lumens	350 lumens	350 lumens	500 lumens
Operating Frequency 套件運作頻率	(kHz)	25~28			
Operating Temperature 套件運作環境溫度	(ta)	0°C - 55 °C			
Minimum Recharging Time 電池充滿所需時間	(h)	12 hours			
Low Voltage Protection 低壓截止保護線路		Electronic Protection (approx. 1V / cell)			
Compliance To 達致認可標準		BS 5266-1, BS EN 61347-2-7, BS EN 60598-2-22 and FSD PPA/104A(4th Revision)			
Guarantee Period 保用期	(M)	12 months			

MODEL 套件型號		JC20N3 JC220N3	JC30N3 JC230N3	JC40N3 JC240N3	JC65N3 JC265N3
Internal Conversion Kit 內藏電池套件		JF20N3	JF30N3	JF40N3	JF65N3
Wattage 適用瓦數	(W)	18W	30W	36W	58W
Battery Capacity & Voltage 電池容量及電壓		5x2.5AH, 6V	5x4AH, 6V	5x4AH, 6V	5x4AH, 6V
Battery Configuration 電池排列方式		Side by side pack			
Main Voltage / Frequency 市電(交流電)輸入電壓 / 頻率	(V)	A/C 220V ( + / - 10%) / 50Hz			
Emergency Starting Time 套件緊急照明啟動時間	(sec.)	<0.3			
Emergency Output 緊急照明輸出流明		300 lumens	350 lumens	350 lumens	500 lumens
Operating Frequency 套件運作頻率	(kHz)	25~28			
Operating Temperature 套件運作環境溫度	(ta)	0°C - 55 °C			
Minimum Recharging Time 電池充滿所需時間	(h)	12 hours for 2 hours discharge, 24 hours for 3 hours discharge			
Low Voltage Protection 低壓截止保護線路		Electronic Protection (approx. 1V / cell)			
Compliance To 達致認可標準		BS 5266-1, BS EN 61347-2-7, BS EN 60598-2-22 and FSD PPA/104A(4th Revision)			
Guarantee Period 保用期	(M)	12 months			

*Options: Sealed Ni-MH High Temp. Rechargeable Battery will be available on request.*

*: Clients can choose 30% or 50% lumen output when mains fail.*

*: Fluor. Batten can be provided by clients or by 'JOHNSON'.*



Emergency fluorescent batten series are provided for a range of T8 tubes when mains fail. They are completed set which to be included charger-inverter, battery pack (NI-CD/NI-MH), ballast, LED indicator lamp, test button and suitable for electromagnetic and electronic ballast.

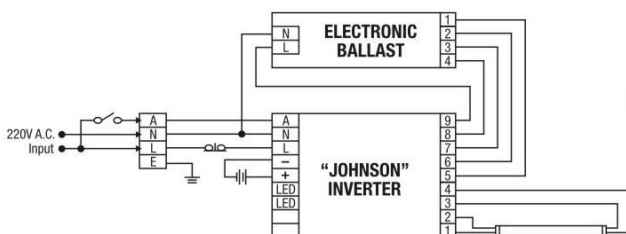


JC20N2-50P, wide type 620L x 100W x 55H(mm)

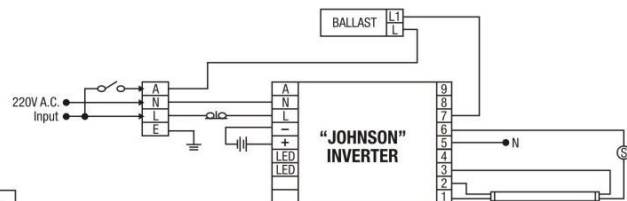


JC20N2, JC20N3, JC40N2, JC40N3

Wiring Diagram:



Electronic Ballast (電子牛)



Conventional Ballast (鎮流器)



**Emergency Weatherproof Fluorescent batten  
T8 Series**

**SELF-CONTAINED EMERGENCY W/P FLUORESCENT BATTEN (IP65)  
MODULES AND SEALED NICKEL CADMIUM (NI-CD) BATTERY PACKS FOR  
2 AND 3 HOURS DURATION - MAINTAINED TYPE**

兩小時及三小時應急防水支架-長明式：包括 電子中樞(轉換/充電器)、鎳鎘電池。

**SPECIFICATION & TECHNICAL DATA**

規格及技術資料

MODEL 套件型號		JC20N2-WP JC220N2-WP	JC40N2-WP JC240N2-WP	JC65N2-WP JC265N2-WP
Internal Conversion Kit 內藏電池套件		<b>JF20N2</b>	<b>JF40N2</b>	<b>JF65N2</b>
Wattage 適用瓦數	(W)	18W	36W	58W
Battery Capacity & Voltage 電池容量及電壓		5x1.8AH, 6V	5x2.5AH, 6V	5x2.5AH, 6V
Battery Configuration 電池排列方式		Side by side pack		
Main Voltage / Frequency 市電(交流電)輸入電壓 / 頻率	(V)	A/C 220V ( + / - 10% ) / 50Hz		
Emergency Starting Time 套件緊急照明啟動時間	(sec.)	<0.3		
Emergency Output 緊急照明輸出流明		300 lumens	350 lumens	500 lumens
Operating Frequency 套件運作頻率	(kHz)	25~28		
Operating Temperature 套件運作環境溫度	(ta)	0℃ - 55℃		
Minimum Recharging Time 電池充滿所需時間	(h)	12 hours		
Low Voltage Protection 低壓截止保護線路		Electronic Protection (approx. 1V / cell)		
Compliance To 達致認可標準		BS 5266-1, BS EN 61347-2-7, BS EN 60598-2-22 and FSD PPA/104A(4th Revision)		
Guarantee Period 保用期	(M)	12 months		

MODEL 套件型號		JC20N3-WP JC220N3-WP	JC40N3-WP JC240N3-WP	JC65N3-WP JC265N3-WP
Internal Conversion Kit 內藏電池套件		<b>JF20N3</b>	<b>JF40N3</b>	<b>JF65N3</b>
Wattage 適用瓦數	(W)	18W	36W	58W
Battery Capacity & Voltage 電池容量及電壓		5x2.5AH, 6V	5x4AH, 6V	5x4AH, 6V
Battery Configuration 電池排列方式		Side by side pack		
Main Voltage / Frequency 市電(交流電)輸入電壓 / 頻率	(V)	A/C 220V ( + / - 10% ) / 50Hz		
Emergency Starting Time 套件緊急照明啟動時間	(sec.)	<0.3		
Emergency Output 緊急照明輸出流明		300 lumens	350 lumens	500 lumens
Operating Frequency 套件運作頻率	(kHz)	25~28		
Operating Temperature 套件運作環境溫度	(ta)	0℃ - 55℃		
Minimum Recharging Time 電池充滿所需時間	(h)	12 hours for 2 hours discharge, 24 hours for 3 hours discharge		
Low Voltage Protection 低壓截止保護線路		Electronic Protection (approx. 1V / cell)		
Compliance To 達致認可標準		BS 5266-1, BS EN 61347-2-7, BS EN 60598-2-22 and FSD PPA/104A(4th Revision)		
Guarantee Period 保用期	(M)	12 months		

*Options: Sealed Ni-MH High Temp. Rechargeable Battery will be available on request.*

*: Clients can choose 30% or 50% lumen output when mains fail.*

*: Weatherproof fluo. Batten can be provided by clients or by 'JOHNSON'.*



# JOHNSON



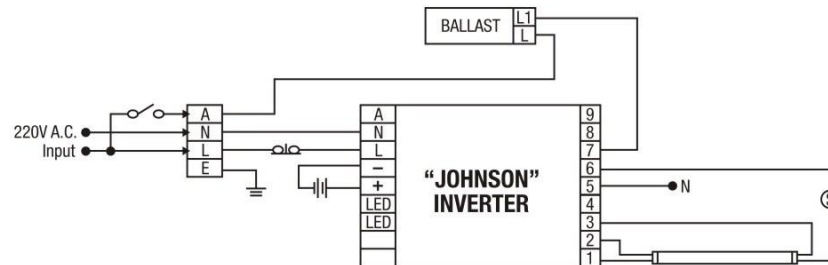
Emergency W/P fluorescent batten series (IP 65) are used in car parks, corridors or outdoor places. The bottom and cover are made by ABS and PC with plastic or stainless steel clamps. The W/P battens are suitable for electromagnetic and electron ballast and complied with FSD PPA/104A(4<sup>th</sup> Revision) 850°C hot wire test.



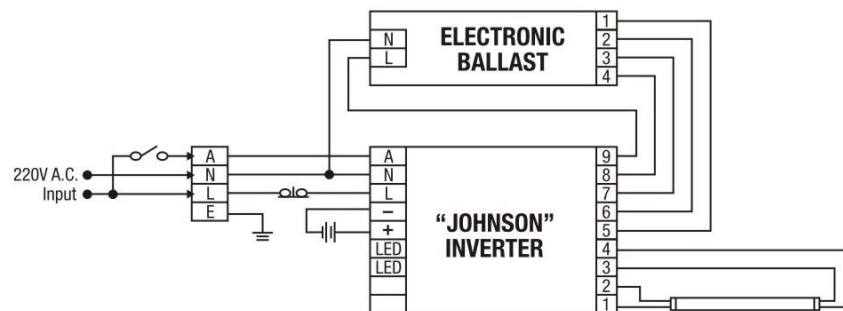
JC20N2-WP, JC40N2-WP  
 JC20NH3-WP, JC40NH3-WP

Wiring Diagram:

Conventional Ballast (鎮流器)



Electronic Ballast (電子牛)





**Emergency Fluorescent Batten  
T5 Series**

**SELF-CONTAINED EMERGENCY FLUORESCENT BATTEN  
MODULES AND SEALED NICKEL CADMIUM (Ni-CD) BATTERY PACKS FOR  
2 AND 3 HOURS DURATION - MAINTAINED TYPE**

兩小時及三小時應急支架-長明式：包括 電子中樞(轉換/充電器)、鎳鎘電池。

**SPECIFICATION & TECHNICAL DATA**

規格及技術資料

MODEL 套件型號		JC14N2 JC214N2	JC28N2 JC228N2	JC35N2 JC235N2
Internal Conversion Kit 內藏電池套件		JF14N2	JF28N2	JF35N2
Wattage 適用瓦數	(W)	14W	28W	35W
Battery Capacity & Voltage 電池容量及電壓		5x1.8AH, 6V	8x1.8AH, 9.6V	8x2.5AH, 9.6V
Battery Configuration 電池排列方式		Side by side pack		
Main Voltage / Frequency 市電(交流電)輸入電壓 / 頻率	(V)	A/C 220V ( + / - 10%) / 50Hz		
Emergency Starting Time 套件緊急照明啟動時間	(sec.)	<0.3		
Emergency Output 緊急照明輸出流明		250 lumens	400 lumens	550 lumens
Operating Frequency 套件運作頻率	(kHz)	25~28		
Operating Temperature 套件運作環境溫度	(ta)	0°C - 55 °C		
Minimum Recharging Time 電池充滿所需時間	(h)	12 hours		
Low Voltage Protection 低壓截止保護線路		Electronic Protection (approx. 1V / cell)		
Compliance To 達致認可標準		BS 5266-1, BS EN 61347-2-7, BS EN 60598-2-22 and FSD PPA/104A(4th Revision)		
Guarantee Period 保用期	(M)	12 months		

MODEL 套件型號		JC14N3 JC214N3	JC28N3 JC228N3	JC35N3 JC235N3
Internal Conversion Kit 內藏電池套件		JF14N3	JF28N3	JF35N3
Wattage 適用瓦數	(W)	14W	28W	35W
Battery Capacity & Voltage 電池容量及電壓		5x2.5AH, 6V	8x2.5AH, 9.6V	8x4AH, 9.6V
Battery Configuration 電池排列方式		Side by side or Stick pack		
Main Voltage / Frequency 市電(交流電)輸入電壓 / 頻率	(V)	A/C 220V ( + / - 10%) / 50Hz		
Emergency Starting Time 套件緊急照明啟動時間	(sec.)	<0.3		
Emergency Output 緊急照明輸出流明		250 lumens	400 lumens	550 lumens
Operating Frequency 套件運作頻率	(kHz)	25~28		
Operating Temperature 套件運作環境溫度	(ta)	0°C - 55 °C		
Minimum Recharging Time 電池充滿所需時間	(h)	12 hours for 2 hours discharge, 24 hours for 3 hours discharge		
Low Voltage Protection 低壓截止保護線路		Electronic Protection (approx. 1V / cell)		
Compliance To 達致認可標準		BS 5266-1, BS EN 61347-2-7, BS EN 60598-2-22 and FSD PPA/104A(4th Revision)		
Guarantee Period 保用期	(M)	12 months		

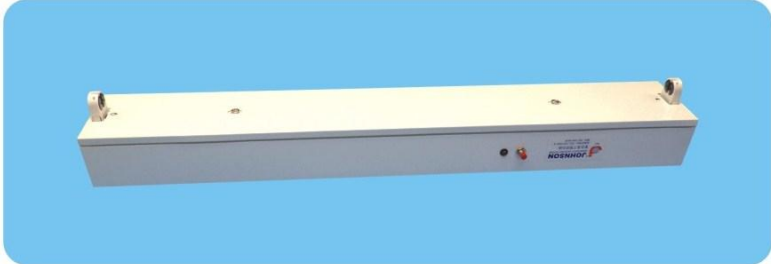
Options: Sealed Ni-MH High Temp. Rechargeable Battery will be available on request.

: Clients can choose 30% or 50% lumen output when mains fail.

: Flu. Batten can be provided by clients or by 'JOHNSON'.



Emergency fluorescent batten series are provided for a range of T5 tubes when mains fail. They are completed set which to be included charger-inverter, battery pack, ballast, LED indicator lamp and test button.



JC14NH2-50P, wide type 580L x 100W x 55H(mm)

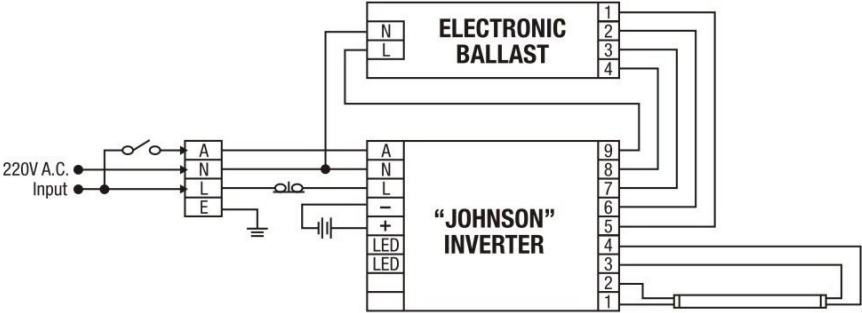


JC14NH2-50P with auto test kit.



JC14N2, JC28N2, JC28NH2-50P

Wiring Diagram:  
Electronic Ballast(電子牛)





## Emergency Weatherproof Fluorescent Batten T5 Series

### SELF-CONTAINED EMERGENCY W/P FLUORESCENT BATTEN (IP65) MODULES AND SEALED NICKEL CADMIUM (NI-CD) BATTERY PACKS FOR 2 AND 3 HOURS DURATION - MAINTAINED TYPE

兩小時及三小時應急防水支架-長明式：包括 電子中樞(轉換/充電器)、鎳鎘電池。

#### SPECIFICATION & TECHNICAL DATA

規格及技術資料

MODEL 套件型號		JC14N2-WP JC214N2-WP	JC28N2-WP JC228N2-WP	JC35N2-WP JC235N2-WP
Internal Conversion Kit 內藏電池套件		JF14N2	JF28N2	JF35N2
Wattage 適用瓦數	(W)	14W	28W	35W
Battery Capacity & Voltage 電池容量及電壓		5x1.8AH, 6V	8x1.8AH, 9.6V	8x2.5AH, 9.6V
Battery Configuration 電池排列方式		Side by side pack		
Main Voltage / Frequency 市電(交流電)輸入電壓 / 頻率	(V)	A/C 220V ( + / - 10% ) / 50Hz		
Emergency Starting Time 套件緊急照明啟動時間	(sec.)	<0.3		
Emergency Output 緊急照明輸出流明		250 lumens	400 lumens	550 lumens
Operating Frequency 套件運作頻率	(kHz)	25~28		
Operating Temperature 套件運作環境溫度	(ta)	0°C - 55 °C		
Minimum Recharging Time 電池充滿所需時間	(h)	12 hours		
Low Voltage Protection 低壓截止保護線路		Electronic Protection (approx. 1V / cell)		
Compliance To 達致認可標準		BS 5266-1, BS EN 61347-2-7, BS EN 60598-2-22 and FSD PPA/104A(4th Revision)		
Guarantee Period 保用期	(M)	12 months		

MODEL 套件型號		JC14N3-WP JC214N3-WP	JC28N3-WP JC228N3-WP	JC35N3-WP JC235N3-WP
Internal Conversion Kit 內藏電池套件		JF14N3	JF28N3	JF35N3
Wattage 適用瓦數	(W)	14W	28W	35W
Battery Capacity & Voltage 電池容量及電壓		5x2.5AH, 6V	8x2.5AH, 9.6V	8x4AH, 9.6V
Battery Configuration 電池排列方式		Side by side or Stick pack		
Main Voltage / Frequency 市電(交流電)輸入電壓 / 頻率	(V)	A/C 220V ( + / - 10% ) / 50Hz		
Emergency Starting Time 套件緊急照明啟動時間	(sec.)	<0.3		
Emergency Output 緊急照明輸出流明		250 lumens	400 lumens	550 lumens
Operating Frequency 套件運作頻率	(kHz)	25~28		
Operating Temperature 套件運作環境溫度	(ta)	0°C - 55 °C		
Minimum Recharging Time 電池充滿所需時間	(h)	12 hours for 2 hours discharge, 24 hours for 3 hours discharge		
Low Voltage Protection 低壓截止保護線路		Electronic Protection (approx. 1V / cell)		
Compliance To 達致認可標準		BS 5266-1, BS EN 61347-2-7, BS EN 60598-2-22 and FSD PPA/104A(4th Revision)		
Guarantee Period 保用期	(M)	12 months		

Options: Sealed Ni-MH High Temp. Rechargeable Battery will be available on request.

: Clients can choose 30% or 50% lumen output when mains fail.

: Weatherproof fluo. Batten can be provided by clients or by 'JOHNSON'.



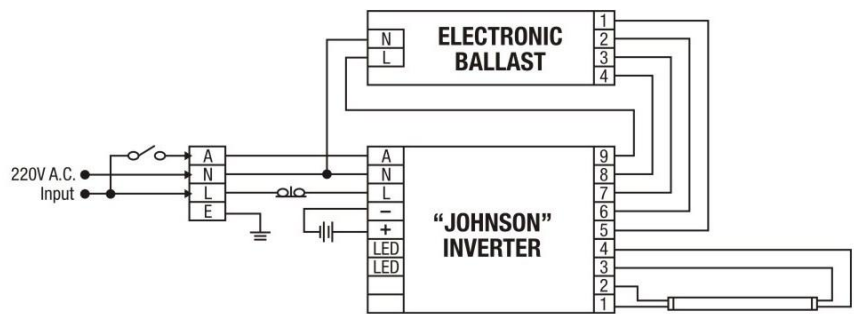
Emergency W/P fluorescent batten series (IP 65) are used in car parks, corridors or outdoor places. The bottom and cover are made by ABS and PC with plastic or stainless steel clamps. The W/P battens are suitable for electromagnetic and electron ballast and complied with FSD PPA/104A(4<sup>th</sup> Revision) 850°C hot wire test.



JC14N2-WP, JC28N2-WP  
JC14NH3-WP, JC28NH3-WP

Wiring Diagram:

Electronic Ballast (電子牛)







## Emergency Weatherproof Bulkhead Fitting T5 and PL Series

### SELF-CONTAINED EMERGENCY W/P BULKHEAD FITTING (IP65) MODULES AND SEALED NICKEL CADMIUM (NI-CD) BATTERY PACKS FOR 2 AND 3 HOURS DURATION - MAINTAINED TYPE

兩小時及三小時應急防水牛眼燈-長明式：包括 電子中樞(轉換/充電器)、鎳鎘電池。

#### SPECIFICATION & TECHNICAL DATA

規格及技術資料

MODEL 套件型號		JBA008F-N2F	JBA208F-N2F	JBA011PL-N2
Internal Conversion Kit 內藏電池套件		JF8N2	JF8N2	JF11PLN2(4 pin)
Wattage 適用瓦數	(W)	8W	8W	11W (4 pin)
Battery Capacity & Voltage 電池容量及電壓		5x1.8AH, 6V	5x1.8AH, 6V	5x1.8AH, 6V
Battery Configuration 電池排列方式		Side by side pack		
Main Voltage / Frequency 市電(交流電)輸入電壓 / 頻率	(V)	A/C 220V ( + / - 10%) / 50Hz		
Emergency Starting Time 套件緊急照明啟動時間	(sec.)	<0.3		
Emergency Output 緊急照明輸出流明		100 lumens	100 lumens	250 lumens
Operating Frequency 套件運作頻率	(kHz)	25~28		
Operating Temperature 套件運作環境溫度	(ta)	0°C - 55 °C		
Minimum Recharging Time 電池充滿所需時間	(h)	12 hours		
Low Voltage Protection 低壓截止保護線路		Electronic Protection (approx. 1V / cell)		
Compliance To 達致認可標準		BS 5266-1, BS EN 61347-2-7, BS EN 60598-2-22 and FSD PPA/104A(4th Revision)		
Guarantee Period 保用期	(M)	12 months		

MODEL 套件型號		JBA008F-N3F	JBA208F-N3F	JBA011PL-N3
Internal Conversion Kit 內藏電池套件		JF8N3	JF8N3	JF11PLN3(4 pin)
Wattage 適用瓦數	(W)	8W	8W	11W (4 pin)
Battery Capacity & Voltage 電池容量及電壓		5x2.5AH, 6V	5x2.5AH, 6V	5x2.5AH, 6V
Battery Configuration 電池排列方式		Side by side or Stick pack		
Main Voltage / Frequency 市電(交流電)輸入電壓 / 頻率	(V)	A/C 220V ( + / - 10%) / 50Hz		
Emergency Starting Time 套件緊急照明啟動時間	(sec.)	<0.3		
Emergency Output 緊急照明輸出流明		100 lumens	100 lumens	250 lumens
Operating Frequency 套件運作頻率	(kHz)	25~28		
Operating Temperature 套件運作環境溫度	(ta)	0°C - 55 °C		
Minimum Recharging Time 電池充滿所需時間	(h)	12 hours for 2 hours discharge, 24 hours for 3 hours discharge		
Low Voltage Protection 低壓截止保護線路		Electronic Protection (approx. 1V / cell)		
Compliance To 達致認可標準		BS 5266-1, BS EN 61347-2-7, BS EN 60598-2-22 and FSD PPA/104A(4th Revision)		
Guarantee Period 保用期	(M)	12 months		

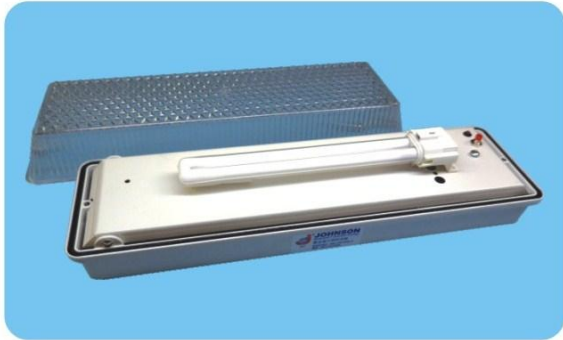
*Options: Sealed Ni-MH High Temp. Rechargeable Battery will be available on request.*

*: Weatherproof bulkhead fitting cannot be built in 30% and 50% battery packs, because no more space inside.*

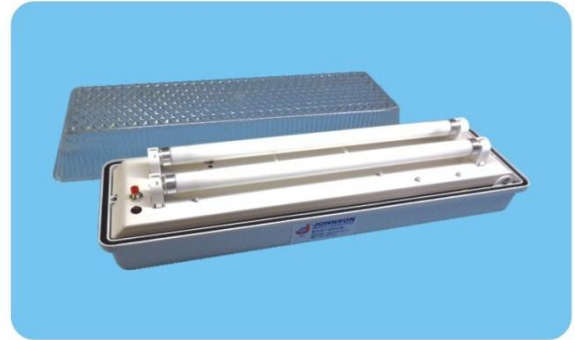
*: Weatherproof bulkhead fitting can be provided by clients or by 'JOHNSON'.*



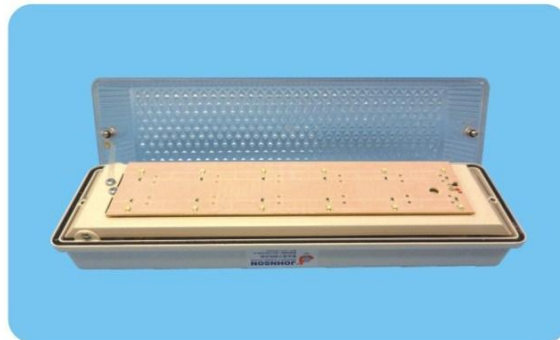
Emergency W/P fluorescent batten and bulkhead fitting series (IP 65) are used in car parks, corridors or outdoor places. They are complied with FSD PPA/104A(4<sup>th</sup> Revision) 850°C hot wire test.



JBA011PL-N2F(4 pin)



JBA208F-N2F ( Normal: 2x8W fluo. tube,  
Emergency: 1x8W fluo. tube)  
JBA208F-N2E (normal & Emergency: 2x8W  
Fluo. Tube)



LED Bulkhead Fitting (Custom-made)

Wiring Diagram:

Electronic Ballast (電子牛)

